

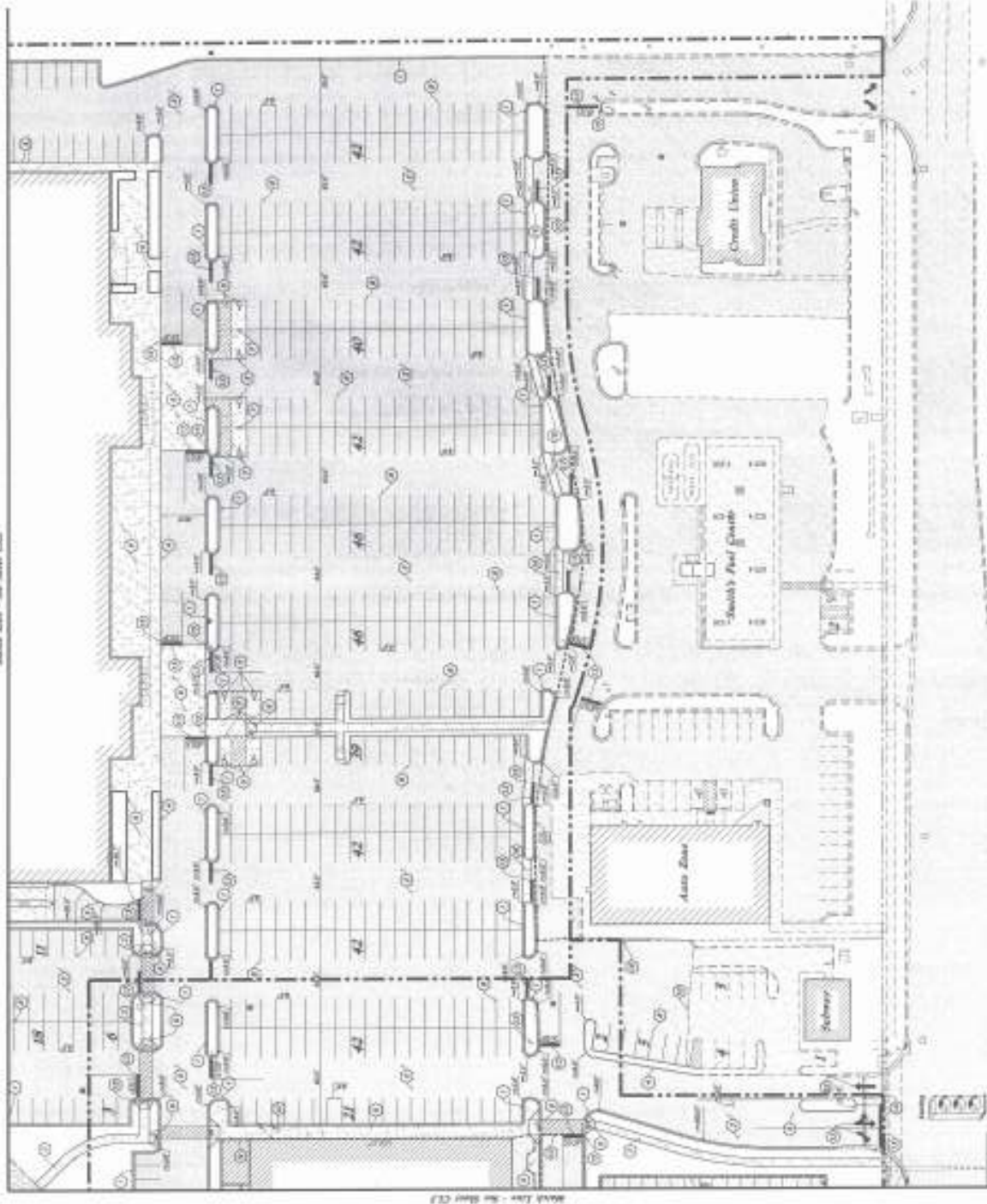


Scale: 1" = 30'

Site Characteristics - Notes

1. Lot 10 - 100' x 100'
2. Lot 11 - 100' x 100'
3. Lot 12 - 100' x 100'
4. Lot 13 - 100' x 100'
5. Lot 14 - 100' x 100'
6. Lot 15 - 100' x 100'
7. Lot 16 - 100' x 100'
8. Lot 17 - 100' x 100'
9. Lot 18 - 100' x 100'
10. Lot 19 - 100' x 100'
11. Lot 20 - 100' x 100'
12. Lot 21 - 100' x 100'
13. Lot 22 - 100' x 100'
14. Lot 23 - 100' x 100'
15. Lot 24 - 100' x 100'
16. Lot 25 - 100' x 100'
17. Lot 26 - 100' x 100'
18. Lot 27 - 100' x 100'
19. Lot 28 - 100' x 100'
20. Lot 29 - 100' x 100'
21. Lot 30 - 100' x 100'
22. Lot 31 - 100' x 100'
23. Lot 32 - 100' x 100'
24. Lot 33 - 100' x 100'
25. Lot 34 - 100' x 100'
26. Lot 35 - 100' x 100'
27. Lot 36 - 100' x 100'
28. Lot 37 - 100' x 100'
29. Lot 38 - 100' x 100'
30. Lot 39 - 100' x 100'
31. Lot 40 - 100' x 100'
32. Lot 41 - 100' x 100'
33. Lot 42 - 100' x 100'
34. Lot 43 - 100' x 100'
35. Lot 44 - 100' x 100'
36. Lot 45 - 100' x 100'
37. Lot 46 - 100' x 100'
38. Lot 47 - 100' x 100'
39. Lot 48 - 100' x 100'
40. Lot 49 - 100' x 100'
41. Lot 50 - 100' x 100'
42. Lot 51 - 100' x 100'
43. Lot 52 - 100' x 100'
44. Lot 53 - 100' x 100'
45. Lot 54 - 100' x 100'
46. Lot 55 - 100' x 100'
47. Lot 56 - 100' x 100'
48. Lot 57 - 100' x 100'
49. Lot 58 - 100' x 100'
50. Lot 59 - 100' x 100'
51. Lot 60 - 100' x 100'
52. Lot 61 - 100' x 100'
53. Lot 62 - 100' x 100'
54. Lot 63 - 100' x 100'
55. Lot 64 - 100' x 100'
56. Lot 65 - 100' x 100'
57. Lot 66 - 100' x 100'
58. Lot 67 - 100' x 100'
59. Lot 68 - 100' x 100'
60. Lot 69 - 100' x 100'
61. Lot 70 - 100' x 100'
62. Lot 71 - 100' x 100'
63. Lot 72 - 100' x 100'
64. Lot 73 - 100' x 100'
65. Lot 74 - 100' x 100'
66. Lot 75 - 100' x 100'
67. Lot 76 - 100' x 100'
68. Lot 77 - 100' x 100'
69. Lot 78 - 100' x 100'
70. Lot 79 - 100' x 100'
71. Lot 80 - 100' x 100'
72. Lot 81 - 100' x 100'
73. Lot 82 - 100' x 100'
74. Lot 83 - 100' x 100'
75. Lot 84 - 100' x 100'
76. Lot 85 - 100' x 100'
77. Lot 86 - 100' x 100'
78. Lot 87 - 100' x 100'
79. Lot 88 - 100' x 100'
80. Lot 89 - 100' x 100'
81. Lot 90 - 100' x 100'
82. Lot 91 - 100' x 100'
83. Lot 92 - 100' x 100'
84. Lot 93 - 100' x 100'
85. Lot 94 - 100' x 100'
86. Lot 95 - 100' x 100'
87. Lot 96 - 100' x 100'
88. Lot 97 - 100' x 100'
89. Lot 98 - 100' x 100'
90. Lot 99 - 100' x 100'
91. Lot 100 - 100' x 100'

North Arrow - See Sheet C12



North Arrow - See Sheet C12

GREAT BASIN ENGINEERING - SOUTH
 CONSULTING ENGINEERS AND LAND SURVEYORS
 2100 WEST 10000 SOUTH, SUITE 100
 SALT LAKE CITY, UTAH 84119
 PHONE: (801) 487-1111
 FAX: (801) 487-1112
 WWW: GBE.UTAH.COM

Smith's Food & Drug #110
 Site Plan
 2002 West Englewood Blvd
 North Ogden, Utah

DATE: 07/10/2013
#110
 Smith's
 FOOD & DRUG STORES
 North Ogden, Utah
C11

- General Site Notes:**
1. All work shall be in accordance with the Utah State Building Code, 2006 Edition, and all applicable local codes.
 2. All work shall be in accordance with the Utah State Electrical Code, 2006 Edition, and all applicable local codes.
 3. All work shall be in accordance with the Utah State Mechanical Code, 2006 Edition, and all applicable local codes.
 4. All work shall be in accordance with the Utah State Plumbing Code, 2006 Edition, and all applicable local codes.
 5. All work shall be in accordance with the Utah State Fire Code, 2006 Edition, and all applicable local codes.
 6. All work shall be in accordance with the Utah State Health Code, 2006 Edition, and all applicable local codes.
 7. All work shall be in accordance with the Utah State Environmental Code, 2006 Edition, and all applicable local codes.
 8. All work shall be in accordance with the Utah State Safety Code, 2006 Edition, and all applicable local codes.
 9. All work shall be in accordance with the Utah State Transportation Code, 2006 Edition, and all applicable local codes.
 10. All work shall be in accordance with the Utah State Public Works Code, 2006 Edition, and all applicable local codes.

Smith's Food & Drug #110
2000 West Ellingwood Ave
West Plains, Mo

Site Plan

GREAT BASIN ENGINEERS - SOUTH
CREATING SUSTAINABLE AND LIVING CONDITIONS
2410 WEST BRUNNEN DRIVE, SUITE 200, WEST PLAINS, MO 65757
PHONE: 660-251-1111 FAX: 660-251-1112
WWW.GREATBASINENGINEERS.COM



Table with 2 columns: Description, Date. Includes entries for 'Site Plan' and 'Site Plan' with dates.



Scale: 1" = 30'

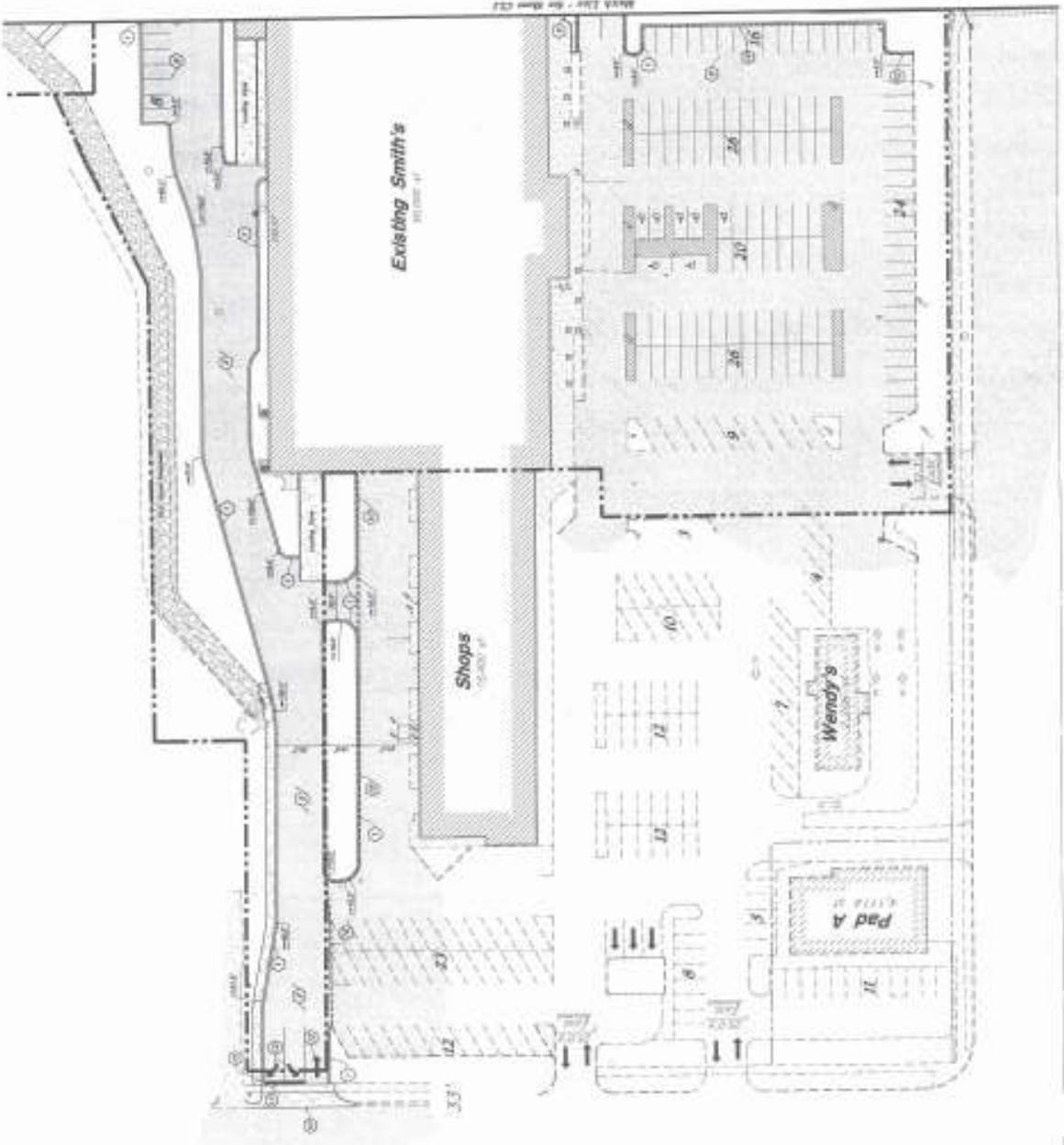
- 1. All Construction Stop
2. 10' x 10' pad
3. 10' x 10' pad
4. 10' x 10' pad
5. 10' x 10' pad
6. 10' x 10' pad
7. 10' x 10' pad
8. 10' x 10' pad
9. 10' x 10' pad
10. 10' x 10' pad
11. 10' x 10' pad
12. 10' x 10' pad
13. 10' x 10' pad
14. 10' x 10' pad
15. 10' x 10' pad
16. 10' x 10' pad
17. 10' x 10' pad
18. 10' x 10' pad
19. 10' x 10' pad
20. 10' x 10' pad

- 1. 10' x 10' pad
2. 10' x 10' pad
3. 10' x 10' pad
4. 10' x 10' pad
5. 10' x 10' pad
6. 10' x 10' pad
7. 10' x 10' pad
8. 10' x 10' pad
9. 10' x 10' pad
10. 10' x 10' pad
11. 10' x 10' pad
12. 10' x 10' pad
13. 10' x 10' pad
14. 10' x 10' pad
15. 10' x 10' pad
16. 10' x 10' pad
17. 10' x 10' pad
18. 10' x 10' pad
19. 10' x 10' pad
20. 10' x 10' pad

EXISTING CONCRETE PAD & CURBWORK
The existing concrete pad and curbwork is to be removed and replaced with new concrete pad and curbwork. The new concrete pad and curbwork is to be finished with a broom finish and is to be placed on a compacted subgrade. The new concrete pad and curbwork is to be placed within 14 days of the start of construction.

EXISTING CONCRETE PAD & CURBWORK
The existing concrete pad and curbwork is to be removed and replaced with new concrete pad and curbwork. The new concrete pad and curbwork is to be finished with a broom finish and is to be placed on a compacted subgrade. The new concrete pad and curbwork is to be placed within 14 days of the start of construction.

EXISTING CONCRETE PAD & CURBWORK
The existing concrete pad and curbwork is to be removed and replaced with new concrete pad and curbwork. The new concrete pad and curbwork is to be finished with a broom finish and is to be placed on a compacted subgrade. The new concrete pad and curbwork is to be placed within 14 days of the start of construction.



Sheet 1301 - See Sheet C12

Smith's Food & Drug #110

Plan & Profile

GREAT BASIN ENGINEERING - SOUTH
CONSULTING ENGINEERS AND ARCHITECTS
2075 SOUTH SHAWNEE ROAD, P.O. BOX 70297
DENVER, COLORADO 80270-7029
PHONE: 303.733.1000 FAX: 303.733.1001



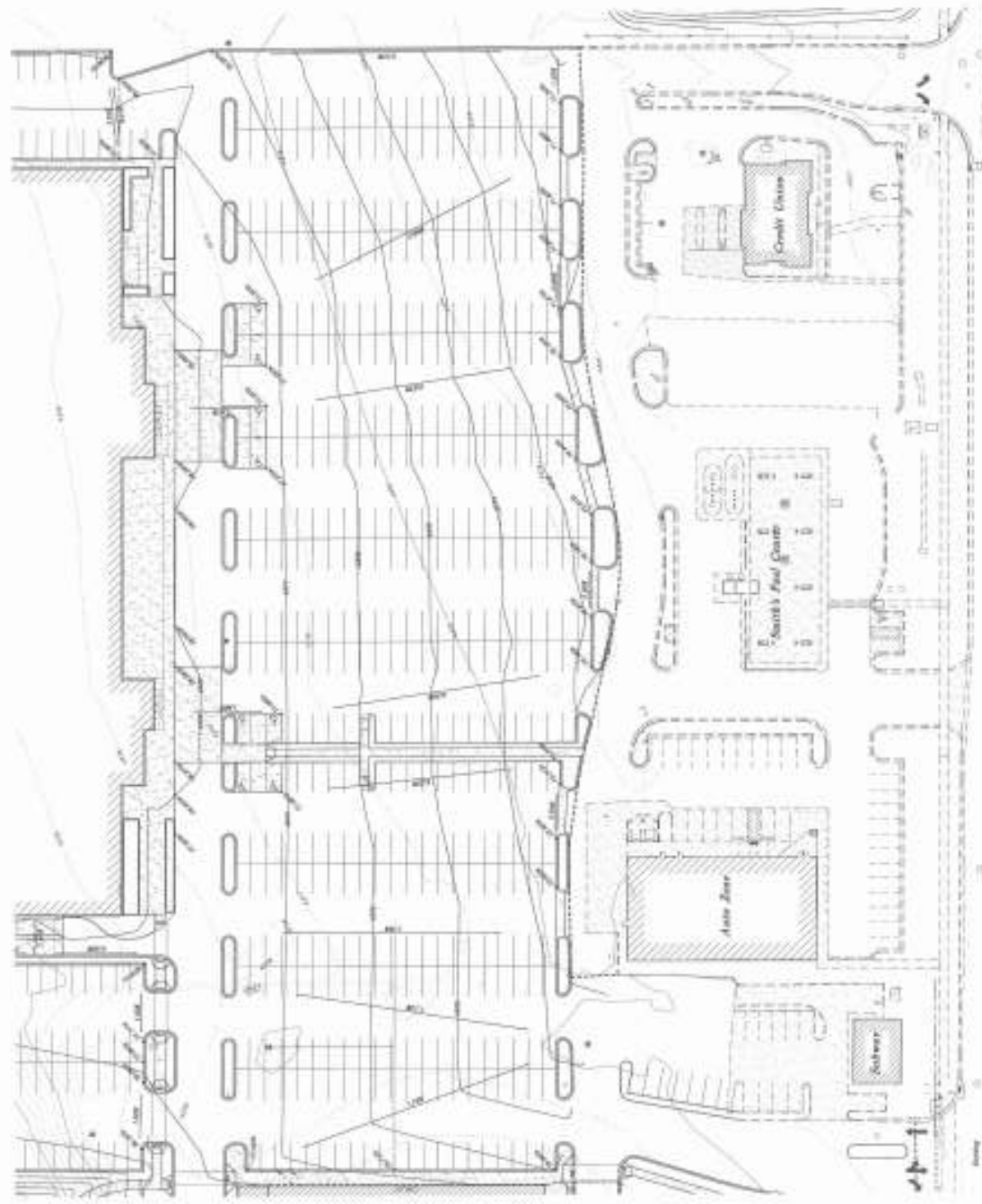
General/ Clarifying Notes:

1. All work shall be in accordance with the current International Building Code, unless otherwise noted.
2. All work shall be in accordance with the current International Mechanical Code, unless otherwise noted.
3. All work shall be in accordance with the current International Fire Code, unless otherwise noted.
4. All work shall be in accordance with the current International Energy Conservation Code, unless otherwise noted.
5. All work shall be in accordance with the current International Plumbing Code, unless otherwise noted.
6. All work shall be in accordance with the current International Electrical Code, unless otherwise noted.
7. All work shall be in accordance with the current International Fire and Safety Code, unless otherwise noted.
8. All work shall be in accordance with the current International Fire and Safety Code, unless otherwise noted.
9. All work shall be in accordance with the current International Fire and Safety Code, unless otherwise noted.
10. All work shall be in accordance with the current International Fire and Safety Code, unless otherwise noted.
11. All work shall be in accordance with the current International Fire and Safety Code, unless otherwise noted.
12. All work shall be in accordance with the current International Fire and Safety Code, unless otherwise noted.
13. All work shall be in accordance with the current International Fire and Safety Code, unless otherwise noted.
14. All work shall be in accordance with the current International Fire and Safety Code, unless otherwise noted.
15. All work shall be in accordance with the current International Fire and Safety Code, unless otherwise noted.
16. All work shall be in accordance with the current International Fire and Safety Code, unless otherwise noted.
17. All work shall be in accordance with the current International Fire and Safety Code, unless otherwise noted.
18. All work shall be in accordance with the current International Fire and Safety Code, unless otherwise noted.
19. All work shall be in accordance with the current International Fire and Safety Code, unless otherwise noted.
20. All work shall be in accordance with the current International Fire and Safety Code, unless otherwise noted.

Shop and Fabrication Requirements, NITE:

1. All steel work shall be in accordance with the current AISC Specification for Structural Steel Buildings, unless otherwise noted.
2. All steel work shall be in accordance with the current AISC Specification for Structural Steel Buildings, unless otherwise noted.
3. All steel work shall be in accordance with the current AISC Specification for Structural Steel Buildings, unless otherwise noted.
4. All steel work shall be in accordance with the current AISC Specification for Structural Steel Buildings, unless otherwise noted.
5. All steel work shall be in accordance with the current AISC Specification for Structural Steel Buildings, unless otherwise noted.
6. All steel work shall be in accordance with the current AISC Specification for Structural Steel Buildings, unless otherwise noted.
7. All steel work shall be in accordance with the current AISC Specification for Structural Steel Buildings, unless otherwise noted.
8. All steel work shall be in accordance with the current AISC Specification for Structural Steel Buildings, unless otherwise noted.
9. All steel work shall be in accordance with the current AISC Specification for Structural Steel Buildings, unless otherwise noted.
10. All steel work shall be in accordance with the current AISC Specification for Structural Steel Buildings, unless otherwise noted.

ALL WORK SHALL BE IN ACCORDANCE WITH THE CURRENT INTERNATIONAL BUILDING CODE, UNLESS OTHERWISE NOTED. ALL WORK SHALL BE IN ACCORDANCE WITH THE CURRENT INTERNATIONAL MECHANICAL CODE, UNLESS OTHERWISE NOTED. ALL WORK SHALL BE IN ACCORDANCE WITH THE CURRENT INTERNATIONAL FIRE CODE, UNLESS OTHERWISE NOTED. ALL WORK SHALL BE IN ACCORDANCE WITH THE CURRENT INTERNATIONAL ENERGY CONSERVATION CODE, UNLESS OTHERWISE NOTED. ALL WORK SHALL BE IN ACCORDANCE WITH THE CURRENT INTERNATIONAL PLUMBING CODE, UNLESS OTHERWISE NOTED. ALL WORK SHALL BE IN ACCORDANCE WITH THE CURRENT INTERNATIONAL ELECTRICAL CODE, UNLESS OTHERWISE NOTED. ALL WORK SHALL BE IN ACCORDANCE WITH THE CURRENT INTERNATIONAL FIRE AND SAFETY CODE, UNLESS OTHERWISE NOTED.



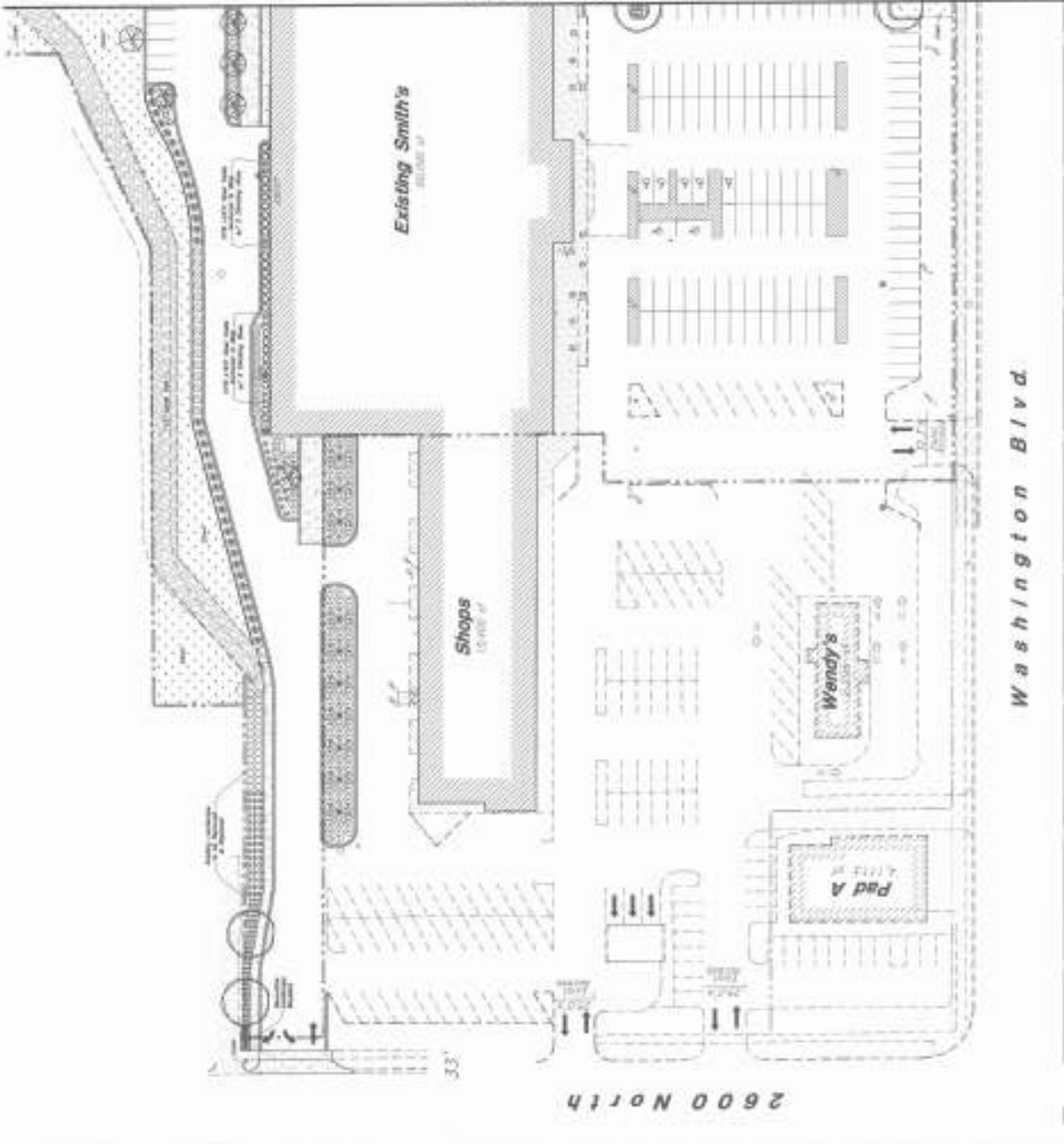


Scale: 1" = 30'

Plant Legend

- Tree:
 - 1. 12" DBH Norway Spruce
 - 2. 12" DBH White Pine
 - 3. 12" DBH Blue Spruce
 - 4. 12" DBH Colorado Spruce
 - 5. 12" DBH Douglas Fir
 - 6. 12" DBH Lodgepole Pine
 - 7. 12" DBH Gambel Quercus
 - 8. 12" DBH Gambel Oak
 - 9. 12" DBH Gambel Elm
 - 10. 12" DBH Gambel Ash
 - 11. 12" DBH Gambel Birch
 - 12. 12" DBH Gambel Juniper
 - 13. 12" DBH Gambel Cedar
 - 14. 12" DBH Gambel Cypress
 - 15. 12" DBH Gambel Redwood
 - 16. 12" DBH Gambel Sequoia
 - 17. 12" DBH Gambel Fir
 - 18. 12" DBH Gambel Spruce
 - 19. 12" DBH Gambel Pine
 - 20. 12" DBH Gambel Fir
 - 21. 12" DBH Gambel Spruce
 - 22. 12" DBH Gambel Pine
 - 23. 12" DBH Gambel Fir
 - 24. 12" DBH Gambel Spruce
 - 25. 12" DBH Gambel Pine
 - 26. 12" DBH Gambel Fir
 - 27. 12" DBH Gambel Spruce
 - 28. 12" DBH Gambel Pine
 - 29. 12" DBH Gambel Fir
 - 30. 12" DBH Gambel Spruce
 - 31. 12" DBH Gambel Pine
 - 32. 12" DBH Gambel Fir
 - 33. 12" DBH Gambel Spruce
 - 34. 12" DBH Gambel Pine
 - 35. 12" DBH Gambel Fir
 - 36. 12" DBH Gambel Spruce
 - 37. 12" DBH Gambel Pine
 - 38. 12" DBH Gambel Fir
 - 39. 12" DBH Gambel Spruce
 - 40. 12" DBH Gambel Pine
 - 41. 12" DBH Gambel Fir
 - 42. 12" DBH Gambel Spruce
 - 43. 12" DBH Gambel Pine
 - 44. 12" DBH Gambel Fir
 - 45. 12" DBH Gambel Spruce
 - 46. 12" DBH Gambel Pine
 - 47. 12" DBH Gambel Fir
 - 48. 12" DBH Gambel Spruce
 - 49. 12" DBH Gambel Pine
 - 50. 12" DBH Gambel Fir
 - 51. 12" DBH Gambel Spruce
 - 52. 12" DBH Gambel Pine
 - 53. 12" DBH Gambel Fir
 - 54. 12" DBH Gambel Spruce
 - 55. 12" DBH Gambel Pine
 - 56. 12" DBH Gambel Fir
 - 57. 12" DBH Gambel Spruce
 - 58. 12" DBH Gambel Pine
 - 59. 12" DBH Gambel Fir
 - 60. 12" DBH Gambel Spruce
 - 61. 12" DBH Gambel Pine
 - 62. 12" DBH Gambel Fir
 - 63. 12" DBH Gambel Spruce
 - 64. 12" DBH Gambel Pine
 - 65. 12" DBH Gambel Fir
 - 66. 12" DBH Gambel Spruce
 - 67. 12" DBH Gambel Pine
 - 68. 12" DBH Gambel Fir
 - 69. 12" DBH Gambel Spruce
 - 70. 12" DBH Gambel Pine
 - 71. 12" DBH Gambel Fir
 - 72. 12" DBH Gambel Spruce
 - 73. 12" DBH Gambel Pine
 - 74. 12" DBH Gambel Fir
 - 75. 12" DBH Gambel Spruce
 - 76. 12" DBH Gambel Pine
 - 77. 12" DBH Gambel Fir
 - 78. 12" DBH Gambel Spruce
 - 79. 12" DBH Gambel Pine
 - 80. 12" DBH Gambel Fir
 - 81. 12" DBH Gambel Spruce
 - 82. 12" DBH Gambel Pine
 - 83. 12" DBH Gambel Fir
 - 84. 12" DBH Gambel Spruce
 - 85. 12" DBH Gambel Pine
 - 86. 12" DBH Gambel Fir
 - 87. 12" DBH Gambel Spruce
 - 88. 12" DBH Gambel Pine
 - 89. 12" DBH Gambel Fir
 - 90. 12" DBH Gambel Spruce
 - 91. 12" DBH Gambel Pine
 - 92. 12" DBH Gambel Fir
 - 93. 12" DBH Gambel Spruce
 - 94. 12" DBH Gambel Pine
 - 95. 12" DBH Gambel Fir
 - 96. 12" DBH Gambel Spruce
 - 97. 12" DBH Gambel Pine
 - 98. 12" DBH Gambel Fir
 - 99. 12" DBH Gambel Spruce
 - 100. 12" DBH Gambel Pine
- Shrub:
 - 1. 12" DBH Gambel Quercus
 - 2. 12" DBH Gambel Oak
 - 3. 12" DBH Gambel Elm
 - 4. 12" DBH Gambel Ash
 - 5. 12" DBH Gambel Birch
 - 6. 12" DBH Gambel Juniper
 - 7. 12" DBH Gambel Cedar
 - 8. 12" DBH Gambel Cypress
 - 9. 12" DBH Gambel Redwood
 - 10. 12" DBH Gambel Sequoia
 - 11. 12" DBH Gambel Fir
 - 12. 12" DBH Gambel Spruce
 - 13. 12" DBH Gambel Pine
 - 14. 12" DBH Gambel Fir
 - 15. 12" DBH Gambel Spruce
 - 16. 12" DBH Gambel Pine
 - 17. 12" DBH Gambel Fir
 - 18. 12" DBH Gambel Spruce
 - 19. 12" DBH Gambel Pine
 - 20. 12" DBH Gambel Fir
 - 21. 12" DBH Gambel Spruce
 - 22. 12" DBH Gambel Pine
 - 23. 12" DBH Gambel Fir
 - 24. 12" DBH Gambel Spruce
 - 25. 12" DBH Gambel Pine
 - 26. 12" DBH Gambel Fir
 - 27. 12" DBH Gambel Spruce
 - 28. 12" DBH Gambel Pine
 - 29. 12" DBH Gambel Fir
 - 30. 12" DBH Gambel Spruce
 - 31. 12" DBH Gambel Pine
 - 32. 12" DBH Gambel Fir
 - 33. 12" DBH Gambel Spruce
 - 34. 12" DBH Gambel Pine
 - 35. 12" DBH Gambel Fir
 - 36. 12" DBH Gambel Spruce
 - 37. 12" DBH Gambel Pine
 - 38. 12" DBH Gambel Fir
 - 39. 12" DBH Gambel Spruce
 - 40. 12" DBH Gambel Pine
 - 41. 12" DBH Gambel Fir
 - 42. 12" DBH Gambel Spruce
 - 43. 12" DBH Gambel Pine
 - 44. 12" DBH Gambel Fir
 - 45. 12" DBH Gambel Spruce
 - 46. 12" DBH Gambel Pine
 - 47. 12" DBH Gambel Fir
 - 48. 12" DBH Gambel Spruce
 - 49. 12" DBH Gambel Pine
 - 50. 12" DBH Gambel Fir
 - 51. 12" DBH Gambel Spruce
 - 52. 12" DBH Gambel Pine
 - 53. 12" DBH Gambel Fir
 - 54. 12" DBH Gambel Spruce
 - 55. 12" DBH Gambel Pine
 - 56. 12" DBH Gambel Fir
 - 57. 12" DBH Gambel Spruce
 - 58. 12" DBH Gambel Pine
 - 59. 12" DBH Gambel Fir
 - 60. 12" DBH Gambel Spruce
 - 61. 12" DBH Gambel Pine
 - 62. 12" DBH Gambel Fir
 - 63. 12" DBH Gambel Spruce
 - 64. 12" DBH Gambel Pine
 - 65. 12" DBH Gambel Fir
 - 66. 12" DBH Gambel Spruce
 - 67. 12" DBH Gambel Pine
 - 68. 12" DBH Gambel Fir
 - 69. 12" DBH Gambel Spruce
 - 70. 12" DBH Gambel Pine
 - 71. 12" DBH Gambel Fir
 - 72. 12" DBH Gambel Spruce
 - 73. 12" DBH Gambel Pine
 - 74. 12" DBH Gambel Fir
 - 75. 12" DBH Gambel Spruce
 - 76. 12" DBH Gambel Pine
 - 77. 12" DBH Gambel Fir
 - 78. 12" DBH Gambel Spruce
 - 79. 12" DBH Gambel Pine
 - 80. 12" DBH Gambel Fir
 - 81. 12" DBH Gambel Spruce
 - 82. 12" DBH Gambel Pine
 - 83. 12" DBH Gambel Fir
 - 84. 12" DBH Gambel Spruce
 - 85. 12" DBH Gambel Pine
 - 86. 12" DBH Gambel Fir
 - 87. 12" DBH Gambel Spruce
 - 88. 12" DBH Gambel Pine
 - 89. 12" DBH Gambel Fir
 - 90. 12" DBH Gambel Spruce
 - 91. 12" DBH Gambel Pine
 - 92. 12" DBH Gambel Fir
 - 93. 12" DBH Gambel Spruce
 - 94. 12" DBH Gambel Pine
 - 95. 12" DBH Gambel Fir
 - 96. 12" DBH Gambel Spruce
 - 97. 12" DBH Gambel Pine
 - 98. 12" DBH Gambel Fir
 - 99. 12" DBH Gambel Spruce
 - 100. 12" DBH Gambel Pine
- Grass:
 - 1. Gambel Ryegrass
 - 2. Gambel Fescue
 - 3. Gambel Bluegrass
 - 4. Gambel Orchardgrass
 - 5. Gambel Bromegrass
 - 6. Gambel Perennial Ryegrass
 - 7. Gambel Tall Fescue
 - 8. Gambel Kentucky Bluegrass
 - 9. Gambel Fine Fescue
 - 10. Gambel Hard Fescue
 - 11. Gambel Crested Dog's Tail
 - 12. Gambel Sheep Fescue
 - 13. Gambel Red Fescue
 - 14. Gambel Green Fescue
 - 15. Gambel White Fescue
 - 16. Gambel Black Fescue
 - 17. Gambel Purple Fescue
 - 18. Gambel Yellow Fescue
 - 19. Gambel Orange Fescue
 - 20. Gambel Pink Fescue
 - 21. Gambel Blue Fescue
 - 22. Gambel Green Fescue
 - 23. Gambel Yellow Fescue
 - 24. Gambel Orange Fescue
 - 25. Gambel Pink Fescue
 - 26. Gambel Blue Fescue
 - 27. Gambel Green Fescue
 - 28. Gambel Yellow Fescue
 - 29. Gambel Orange Fescue
 - 30. Gambel Pink Fescue
 - 31. Gambel Blue Fescue
 - 32. Gambel Green Fescue
 - 33. Gambel Yellow Fescue
 - 34. Gambel Orange Fescue
 - 35. Gambel Pink Fescue
 - 36. Gambel Blue Fescue
 - 37. Gambel Green Fescue
 - 38. Gambel Yellow Fescue
 - 39. Gambel Orange Fescue
 - 40. Gambel Pink Fescue
 - 41. Gambel Blue Fescue
 - 42. Gambel Green Fescue
 - 43. Gambel Yellow Fescue
 - 44. Gambel Orange Fescue
 - 45. Gambel Pink Fescue
 - 46. Gambel Blue Fescue
 - 47. Gambel Green Fescue
 - 48. Gambel Yellow Fescue
 - 49. Gambel Orange Fescue
 - 50. Gambel Pink Fescue
 - 51. Gambel Blue Fescue
 - 52. Gambel Green Fescue
 - 53. Gambel Yellow Fescue
 - 54. Gambel Orange Fescue
 - 55. Gambel Pink Fescue
 - 56. Gambel Blue Fescue
 - 57. Gambel Green Fescue
 - 58. Gambel Yellow Fescue
 - 59. Gambel Orange Fescue
 - 60. Gambel Pink Fescue
 - 61. Gambel Blue Fescue
 - 62. Gambel Green Fescue
 - 63. Gambel Yellow Fescue
 - 64. Gambel Orange Fescue
 - 65. Gambel Pink Fescue
 - 66. Gambel Blue Fescue
 - 67. Gambel Green Fescue
 - 68. Gambel Yellow Fescue
 - 69. Gambel Orange Fescue
 - 70. Gambel Pink Fescue
 - 71. Gambel Blue Fescue
 - 72. Gambel Green Fescue
 - 73. Gambel Yellow Fescue
 - 74. Gambel Orange Fescue
 - 75. Gambel Pink Fescue
 - 76. Gambel Blue Fescue
 - 77. Gambel Green Fescue
 - 78. Gambel Yellow Fescue
 - 79. Gambel Orange Fescue
 - 80. Gambel Pink Fescue
 - 81. Gambel Blue Fescue
 - 82. Gambel Green Fescue
 - 83. Gambel Yellow Fescue
 - 84. Gambel Orange Fescue
 - 85. Gambel Pink Fescue
 - 86. Gambel Blue Fescue
 - 87. Gambel Green Fescue
 - 88. Gambel Yellow Fescue
 - 89. Gambel Orange Fescue
 - 90. Gambel Pink Fescue
 - 91. Gambel Blue Fescue
 - 92. Gambel Green Fescue
 - 93. Gambel Yellow Fescue
 - 94. Gambel Orange Fescue
 - 95. Gambel Pink Fescue
 - 96. Gambel Blue Fescue
 - 97. Gambel Green Fescue
 - 98. Gambel Yellow Fescue
 - 99. Gambel Orange Fescue
 - 100. Gambel Pink Fescue

Additional Notes:
 1. All plantings should be done in accordance with the City of Denver's Planting Specifications.
 2. All plantings should be done in accordance with the City of Denver's Planting Specifications.
 3. All plantings should be done in accordance with the City of Denver's Planting Specifications.
 4. All plantings should be done in accordance with the City of Denver's Planting Specifications.



121 2442 442 - 141 2122